



624 Wellington Way
Lexington,
Kentucky 40503
859-223-5694
FAX 859-223-2607
E-Mail: mseinc@mselex.com

Addendum No. 2
Montgomery County Fiscal Court
Montgomery County Senior Center Project
Bid Date: January 8, 2025
Addendum Issue Date: January 2, 2025

The Contractor shall conform to the following changes, as same shall become binding upon the Contract to be issued in response to this invitation.

Specifications

Item 1: Please remove Spec Section 01230 – Alternates from Technical Specifications. There are not alternates for this project.

Item 2: Please include attached Spe Section 09681 – Modular Carpet to Technical Specifications.

Item 3: Custom Creations, Inc. is an acceptable manufacturer for the casework (Not a part of the Door Hardware clarification).

Plan Sheets

Replace Plan Sheet E-1 with attached revised Plan Sheet E-1.

Clarification of Kitchen Equipment

The following equipment will be Owner furnished/installed:

- 1 Gas Range
- 2 Residential Freezers/Coolers or a Walk-in Freezer
- 1 Proofing/Heating Cabinet
- 1 Microwave
- 1 Dishwasher
- 1 Coffee Pot
- 1 Combi Oven (Gas shut off connection to be performed by contractor)
- 1 Double Gas Convection Oven (needs gas connection)

The vent hood is included in the bid package by the contractor.

Clarification on Door Hardware and Cabinetry

Door #18 would have set #5, same as the other offices.

Door #24 is a rolling shutter. Any hardware on it is included from the door manufacturer.

Clarification of M/E

- The specifications were included in Addendum #1, Issued 12-26-2024.
- Romex Cable is not acceptable for branch wiring.
- MC Cable is acceptable for un-exposed branch circuits under 100A.
- Acuity brand lighting can not meet the Lite Tops specification.
- Acuity brand lighting controls are acceptable.
- Cable traveling vertically and above hard ceilings must be in conduit. Cabling above drop ceiling may be open.

END OF ADDENDUM NO. 2

SECTION 09681 - MODULAR CARPET

PART 1 - GENERAL

1.01 SUMMARY

- A. Section Includes: Carpet Tile as specified on the drawings.
 - 1. Moldings, adhesives cements for glued-down installation.
- B. Specified in Other Sections:
 - 1. Wall Base.
 - 2. Transition edges

1.02 SUBMITTALS

- A. Product Data: Submit manufacturer's complete technical product data for each type of edge trim, tack strip, cement and adhesive types and other related materials necessary to complete the installation.
- B. Submit carpet samples for verification of color and patterns:

1.03 QUALITY ASSURANCE

- A. Products and methods of installation specified herein are compatible with and approved by carpet manufacturer.
- B. General Terminology/Information Standard: Carpet and Rug Institute's "Carpet Specifier's Handbook".
- C. Flame/Smoke Resistance Standards: Provide materials meeting the following test rating standards as required Building Code Requirements.
 - 1. Pill Test: ASTM D 2859, or DOC FF-1-70.
 - 2. Floor Radiant Panel Test: ASTM E 648, with minimum average radiant flux ratings not less than 0.22 watts/sq. cm.
 - 3. Smoke Density Test: ASTM E 662 or NFPA No. 258 rating within limit required by governing regulation.

1.04 PRODUCT HANDLING

- A. Contractor is responsible for receiving and handling, on-site, all carpet materials furnished by Owner.
 - 1. For each material delivery, the Contractor shall fill out receiving reports furnished by Owner. Each delivery shall be inspected for damage. All damage shall be noted on the carrier's delivery slips and shall be forwarded to the Construction Manager immediately upon receipt of delivery. If damaged material is not reported when discovered, the Contractor assumes full responsibility.

- B. Storage areas shall be secure and dry with temperatures maintained above 65°F at all times.

1.05 PROJECT CONDITIONS

- A. Coordination: Coordinate this Work with the Work of other Sections to avoid any delay or interference with other Work.
- B. Maintain 70°F. during and 24 hours before and after installation. Maintain temperature of 55°F and a relative humidity range of 35% to 50% in completed areas.
- C. Notify Construction Manager of any defects, mismarking or evidence of damage to carpet materials or appearance of moisture, mildew or fungus.

1.06 WARRANTY

- A. Warrant carpet installation for one year from opening date of facility from becoming unserviceable or causing an objectionable appearance resulting from defects such as:
 - 1. Release from the substrate.
 - 2. Bunching and rippling.
 - 3. Opening of seams.

1.07 MAINTENANCE MATERIALS

- A. Deliver 20 carpet squares of each carpet type to Owner at completion of installation for his reserve supply. Save squares over 1/2 square in size for the Owner's reserve.

PART 2 - PRODUCTS

2.01 ACCEPTABLE PRODUCTS

- A. Carpet Tile: See Architectural drawings Finish Schedule for materials to be provided.

2.02 CARPET ACCESSORIES

- A. Adhesive:
 - 1. Water resistant, non-staining type meeting flammability requirements for installed carpet.
 - 2. Acceptable Products: Adhesive as recommended by Manufacturer of modular carpet tiles.

PART 3 - EXECUTION

3.01 PREPARATION

- A. Repair minor holes, cracks, depressions and rough areas using material recommended by carpet and adhesive manufacturer. Remove contaminants and dirt. Prepare floor as recommended by carpet manufacturer. Leave floor clean and dry.

3.02 INSTALLATION

- A. Comply with manufacturer's instructions and recommendations for joint locations and carpet direction. Maintain uniformity of carpet direction and lay of pile. Center joints at door openings.
- B. Extend carpet under open-bottomed obstructions and under removable flanges and furnishings, and into alcoves and offsets of each space.
 - 1. Install edge guard with epoxy where carpeting ends against other materials. Center edge guard under doors in door openings.
- C. Provide cutouts where required. Install edge guards where edge of carpet is exposed.

3.03 GLUE-DOWN INSTALLATION

- A. Test substrate to demonstrate effectiveness of adhesive. Remove sample demonstrating procedure to minimize damage to carpet. Apply primer to entire substrate as necessary for adequate bond of carpet.
- B. Layout carpet tile prior to adhering. Maintain straight joints, true with lines of building. Except where patterns are indicated, install carpet squares centered in space in both directions. However, no edge tiles shall be cut to less than 1/2 of their width. Carpet tiles shall be laid with 5 adhesive spots per tile. Unless otherwise indicated, install tiles with the nap all running in the same direction.
- C. Securing base of pile at cut edges with seaming cement without evidence on carpet face.
- D. Apply adhesive to substrate in accordance with manufacturer's instructions. Butt carpet edges tightly together to form joints without gaps. Roll lightly to eliminate air pockets and ensure uniform total-area bond of carpet to substrate. Remove adhesive (if any appears) promptly from face of installed carpet.

3.04 SUBSEQUENT OPERATIONS

- A. Remove and dispose of debris and all cut squares less than 1/2 square in size.
- B. Vacuum carpet using commercial machine with face-beater element. Remove spots and replace carpet where spots cannot be removed. Remove protruding face yarn.

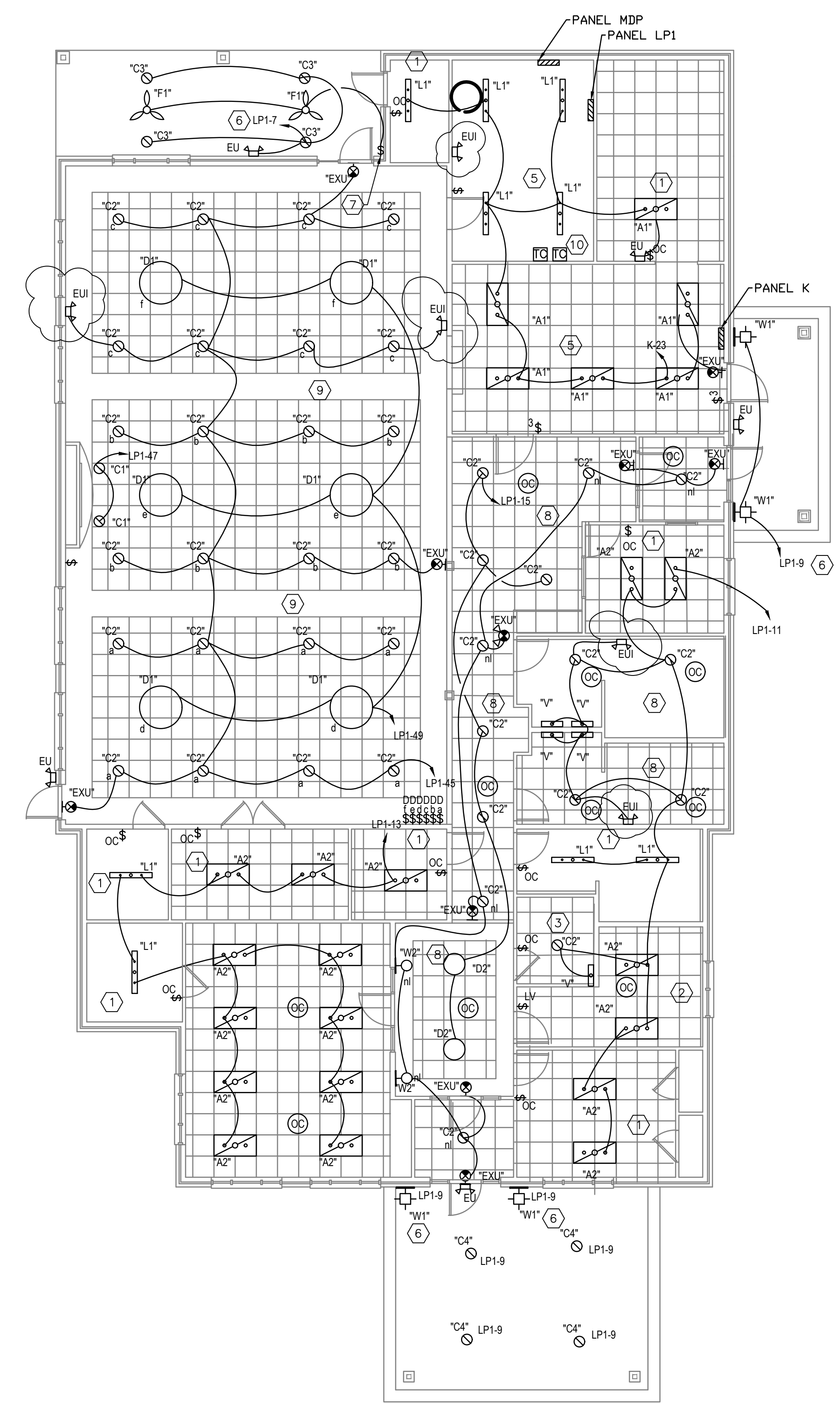
END OF SECTION



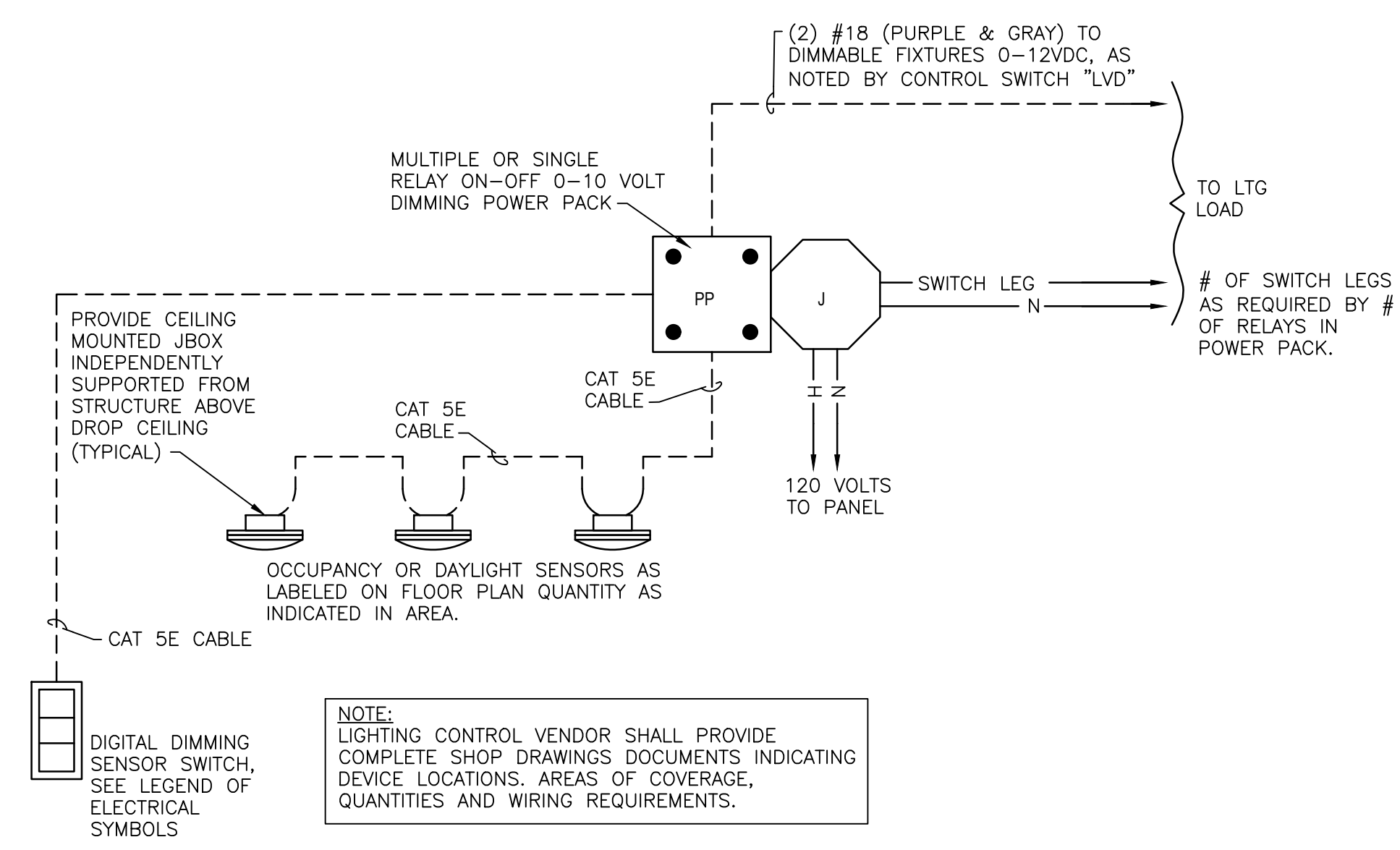
**MONTGOMERY COUNTY
SENIOR CITIZENS CENTER**
MT. STERLING, KENTUCKY

TAGGED NOTES – LIGHTING

1. LIGHTING CONTROLLED WITH WALL MOUNTED PUSH BUTTON, VACANCY SENSOR.
2. LIGHTING IN ROOM CONTROLLED WITH WALL MOUNTED PUSH BUTTON FOR ON/OFF CONTROL. PROVIDE CEILING MOUNTED VACANCY SENSOR FOR AUTO OFF CONTROL.
3. PROVIDE WALL MOUNTED OCCUPANCY SENSOR FOR AUTO ON/OFF CONTROL OF LIGHTS.
4. PROVIDE CEILING MOUNTED OCCUPANCY SENSOR FOR AUTO ON/OFF CONTROL OF LIGHTS.
5. LIGHTING IN THIS AREA CONTROLLED WITH MANUAL ON/OFF TOGGLE SWITCH(S).
6. EXTERIOR LIGHTS CONTROLLED WITH PHOTOCELL ON NORTH SIDE OF BUILDING AND TIME CLOCK. COORDINATE ON/OFF TIMES WITH OWNER. COORDINATE PHOTOCELL LOCATION IN FIELD.
7. EXTERIOR CEILING FANS CONTROLLED WITH MANUAL, WEATHER PROOF SWITCH.
8. LIGHTS IN CORRIDORS CONTROLLED WITH TIME CLOCKS. COORDINATE WITH OWNER ON ON/OFF TIMES. PROVIDE CEILING MOUNTED OCCUPANCY SENSORS FOR CONTROL OF LIGHTS FOR OFF HOURS.
9. LIGHTING IN THIS AREA CONTROLLED WITH LOCAL DIMMER SWITCHES. SWITCHES CONTROL CORRESPONDING LIGHTS.
10. TIME CLOCKS AND CONTACTORS FOR CONTROL OF EXTERIOR AND CORRIDOR LIGHTING



LUMINAIRE SCHEDULE							
TYPE	DESCRIPTION	MFG	CATALOG #	LAMP VOLTAGE	LUMENS	WATTS/ FIXTURE	NOTES
A1	LED TROFFER WITH SELECTABLE LUMAN OUTPUT. IN KITCHEN	NICOR	TGLS324U	LED 120	5814 MAX	47-MAX	RECESSED IN CEILING GRID
A2	LED TROFFER WITH SELECTABLE LUMAN OUTPUT	NICOR	TGLS324U	LED 120	5814 MAX	47-MAX	RECESSED IN CEILING GRID
C1	4" LED CAN LIGHT - WALL WASH	NICOR	CDG4138SU9CLWHMD/CDG1LENS WW	LED 120	3800 MAX	37 - MAX	RECESSED IN CEILING, SWITCHABLE LUMENS, 0-10V DIMMING
C2	6" LED CAN LIGHT	NICOR	CDG6138SUS9CLWHMD	LED 120	3800 MAX	37 - MAX	RECESSED IN CEILING, SWITCHABLE LUMENS, 0-10V DIMMING
C3	6" LED CAN LIGHT - BATTERY BACKUP	NICOR	CDG6138SUS9CLWHMD E2	LED 120	3800 MAX	37 - MAX	RECESSED IN CEILING, SWITCHABLE LUMENS, 0-10V DIMMING
C4	SURFACE MOUNTED CANOPY LIGHT	NICOR	OUC4 075S UNV S BZ	LED 120	9700 MAX	75 - MAX	SURFACE MOUNTED, SWITCHABLE LUMENS.
D1	LARGE DECORATIVE LIGHT	LITE TOPS	PD 6667 115 01 48 DR SN	LED 120	4000	42.5	5 MEDIUM BASE BULBS
D2	SMALL DECORATIVE LIGHT	LITE TOPS	SF 6432 115 01 1053- SN	LED 120	2400	25.5	3 MEDIUM BASE BULBS
EU	EGRESS LIGHT	NICOR	EOT 2 UNV S BZ P 8 EM CW	LED 120			
EXU	EGRESS LIGHT	NICOR	EML3 10 UNV WH	LED 120			
EXU	EXIT SIGN EGRESS LIGHT COMBO	NICOR	ECL1 20 WH S 2	LED 120			LED EXIT SIGN/ EMERGENCY COMBO
F1	CEILING FAN	HUNTER	50258	LED 120	3200 MAX	38 - MAX	CABO FRIO OUTDOOR 52 INCH FAN
L1	LED STRIP LIGHT	NICOR	LSL1 4 45 S U S 8	LED 120	12803 MAX	93 - MAX	SURFACE MOUNTED,
V	LED VANITY	NICOR	32103 LED NK 40K	LED 120	3880 MAX	48 - MAX	
W	LED WALL PACK, SELECTABLE LUMENS, BATTERY BACKUP	NICOR	OWG4100SUNVSBZ E08	LED 120	13231 MAX	97 - MAX	0-10V DIMMING, WALL PACK, BATTERY BACKUP
W1	DECORATIVE LED WALL MOUNT - EXTERIOR	NICOR	LED BK 40K P	LED 120	1200	16	
W2	DECORATIVE LED WALL MOUNT - INTERIOR	LITE TOPS	WF A120 TBD 196 SN	LED 120	1,600	17	2 Candelabra Bulbs



ELECTRICAL - LIGHTING PLAN
SCALE: 1/8" = 1'-0"

OCCUPANCY SENSOR DETAIL
SCALE: N.T.S.

DATE	REVISION	BY
1/2/25	1 LIGHTING REVISION	

PROJECT NO.	DESIGNED BY	DRAWN BY	CHECKED BY	REVIEWED BY	DATE	SCALE
5067-03	JM	AJ	JJF	JJF	SEPTEMBER 2024	AS NOTED

**Engineers
Architects
Planners**

nse
OF KENTUCKY, INC.

Phone: (859) 223-5694
624 Wellington Way
Lexington, KY 40503
Fax: (859) 223-2607
www.nselex.com

